

Setting up HyperTerminal for use with the AD 2000[®]

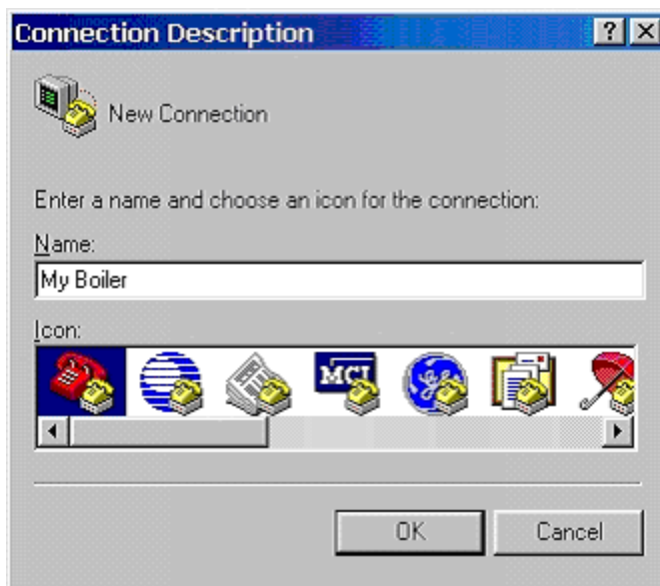
Follow the steps outlined below to properly set up HyperTerminal for use with the AD 2000[™].

At the time these directions were written (9/04), HyperTerminal is available in version 6.3. If your version is different, these instructions may vary slightly.

Locate and execute the HyperTerminal Application from your Start Menu. Note: Microsoft includes HyperTerminal with each version of Windows. If you can't find it, it may be located under accessories.



1. This is the HyperTerminal splash screen.



2. Enter an appropriate name for the location you'll be connecting to. We have selected "My Boiler" in this example.

You can also choose an icon from the icon list.

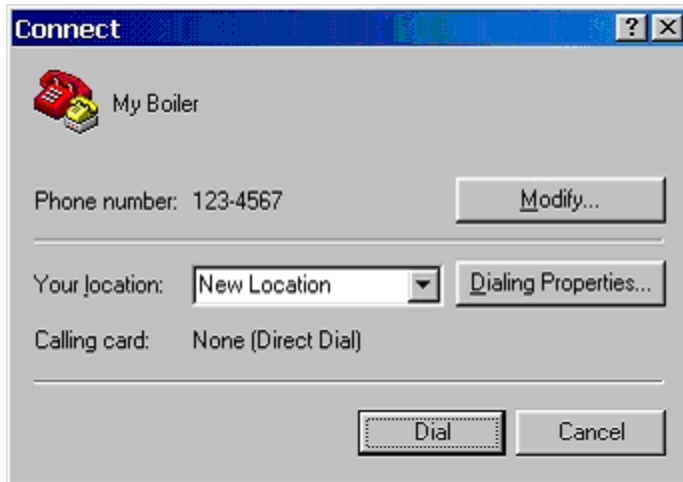
Press **OK** when complete.



3. Enter the telephone number of the line connected to your AD 2000™.

Press **OK** when complete.

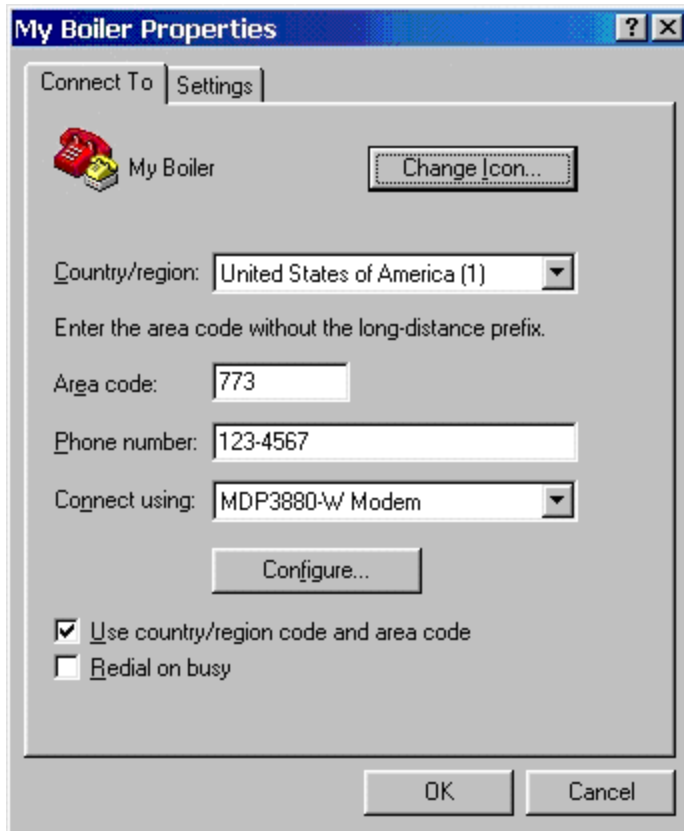
Note: The modem listed in this example will probably be different on your PC.



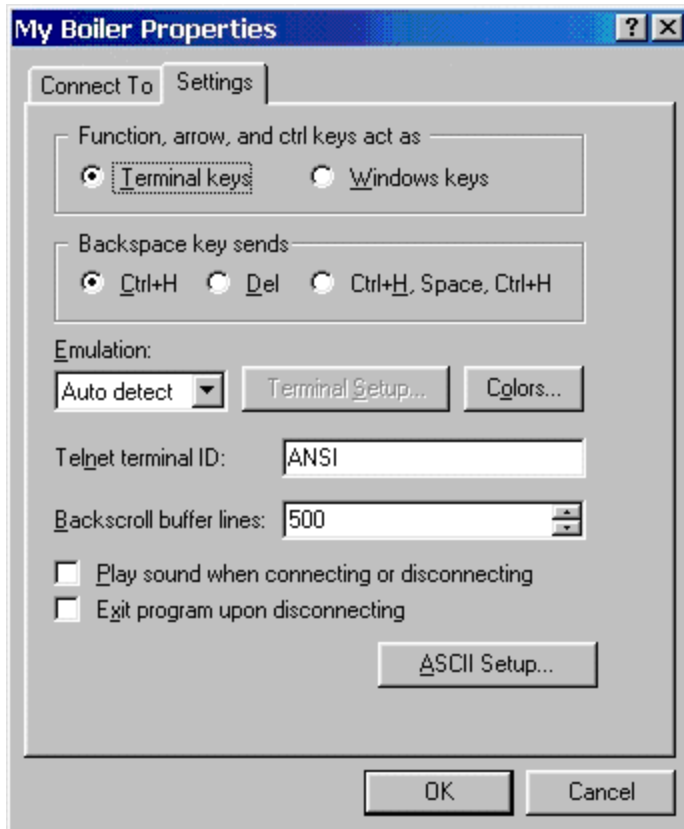
4. You'll need to set what is known as "Local Echo" before you can connect. Local Echo means what you type in will be displayed on the screen. Don't skip this step.

This needs to be done only on the first connection.

Press the **MODIFY** button.



5. When you see this screen, locate the **SETTINGS** tab on the upper portion of the screen and click on it.

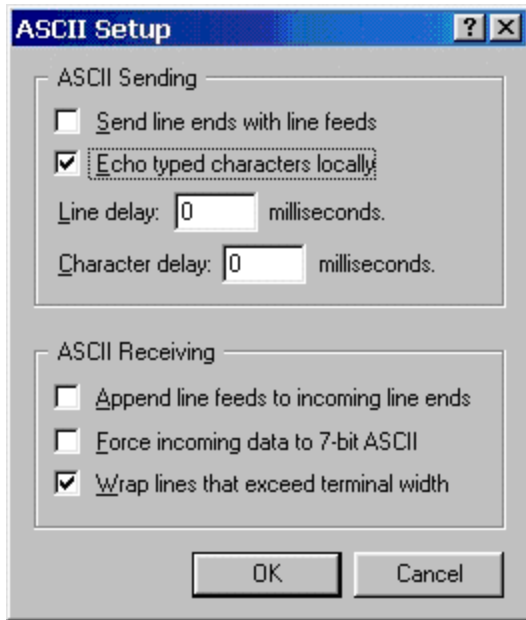


6. Here we are at the **SETTINGS** tab. Locate the button named **ASCII Setup**.

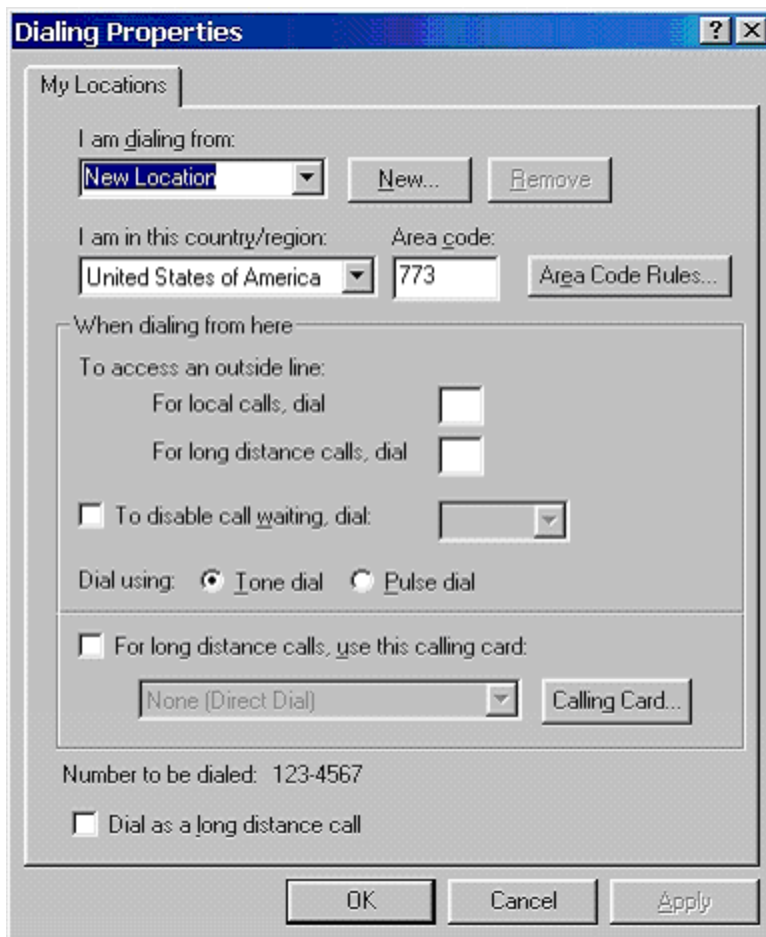
Should you wonder, ASCII stands for;

American Standard Code for Information Interchange

Press the **ASCII SETUP** button.



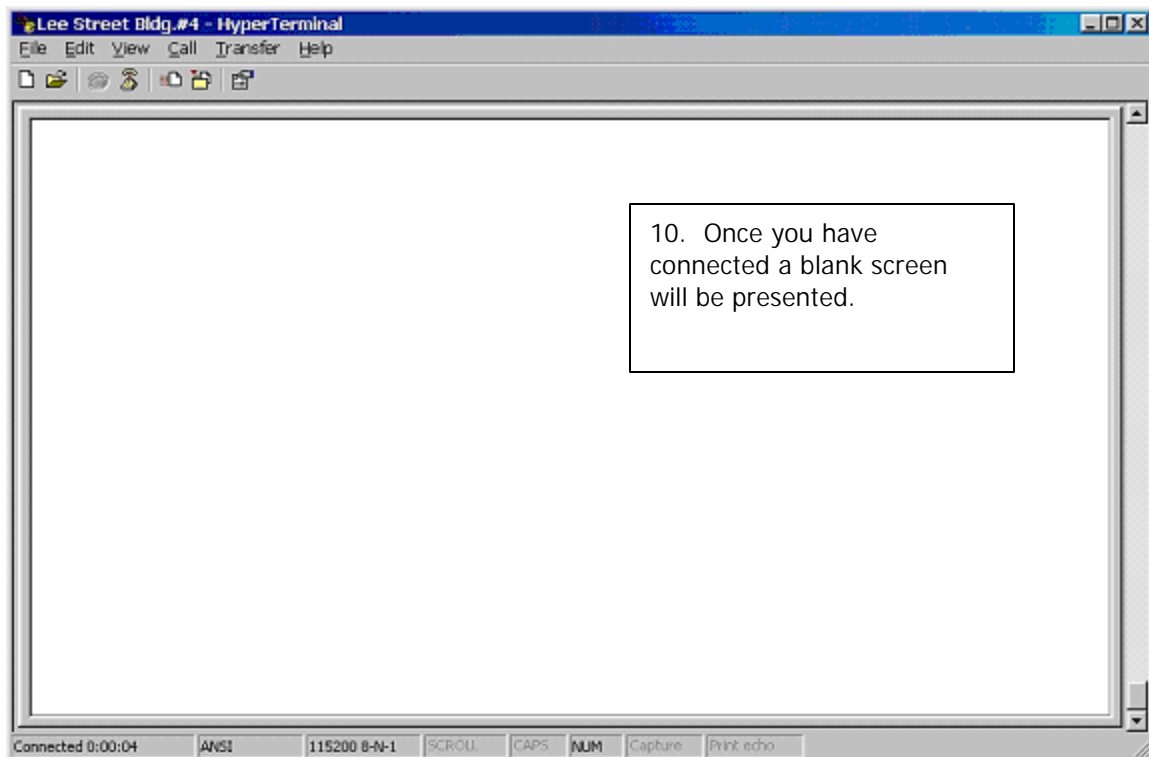
7. Select the checkbox labeled **Echo Typed Characters Locally**.
Press OK.



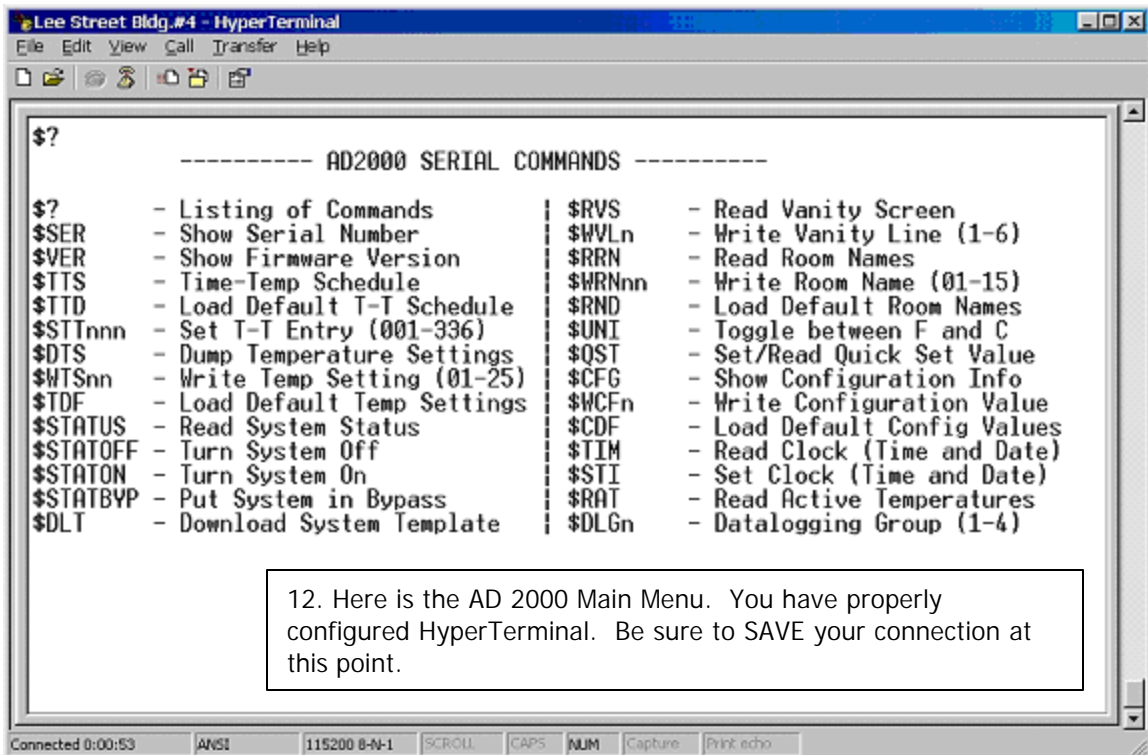
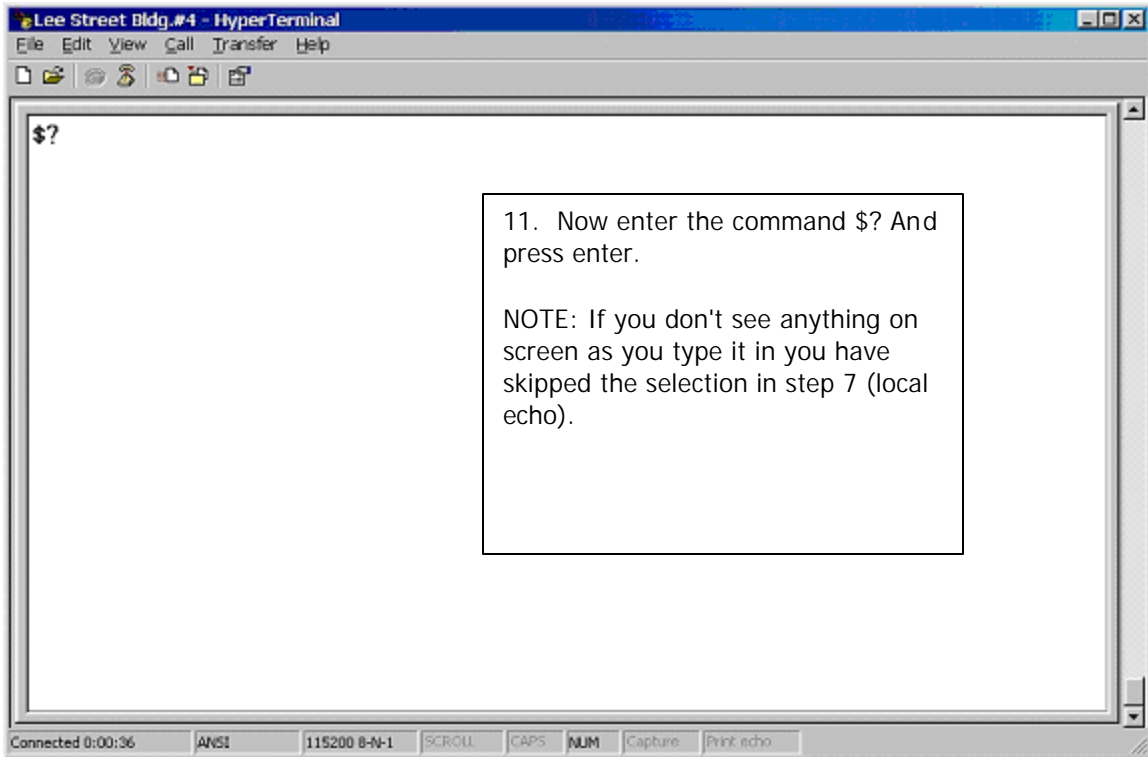
8.
Press **OK**.



9. Press the **Dial Now** button and HyperTerminal will attempt a connection.

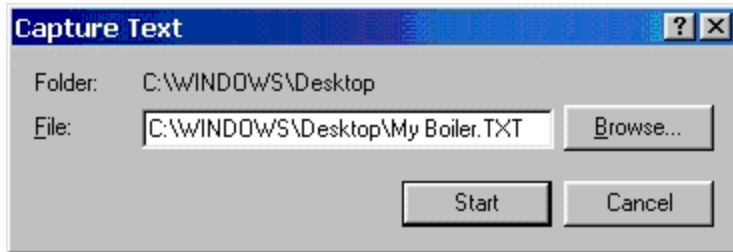


10. Once you have connected a blank screen will be presented.



If you wish to save the contents of your download session to a file go to the Transfer drop down menu located near the top of the screen and select **CAPTURE TEXT**.

The following dialog will be presented. We recommend you press the **Browse** button and save a file to your desktop as shown below.



Once you have completed your download session go to the Transfer drop down menu located near the top of the screen and select **CAPTURE TEXT** then STOP.

To end your AD 2000 session go to the Call drop down menu located near the top of the screen and select CALL DISCONNECT.

Please download and refer to the "Advanced Communications" manual for instructions on how to use the AD 2000 Main Menu functions. These instructions are for setting up HyperTerminal only.

Note:

If you have followed the above steps and saved your connection, you won't have to repeat these steps again. Locate HyperTerminal Connections in the Start menu and you should find your previously saved connection.